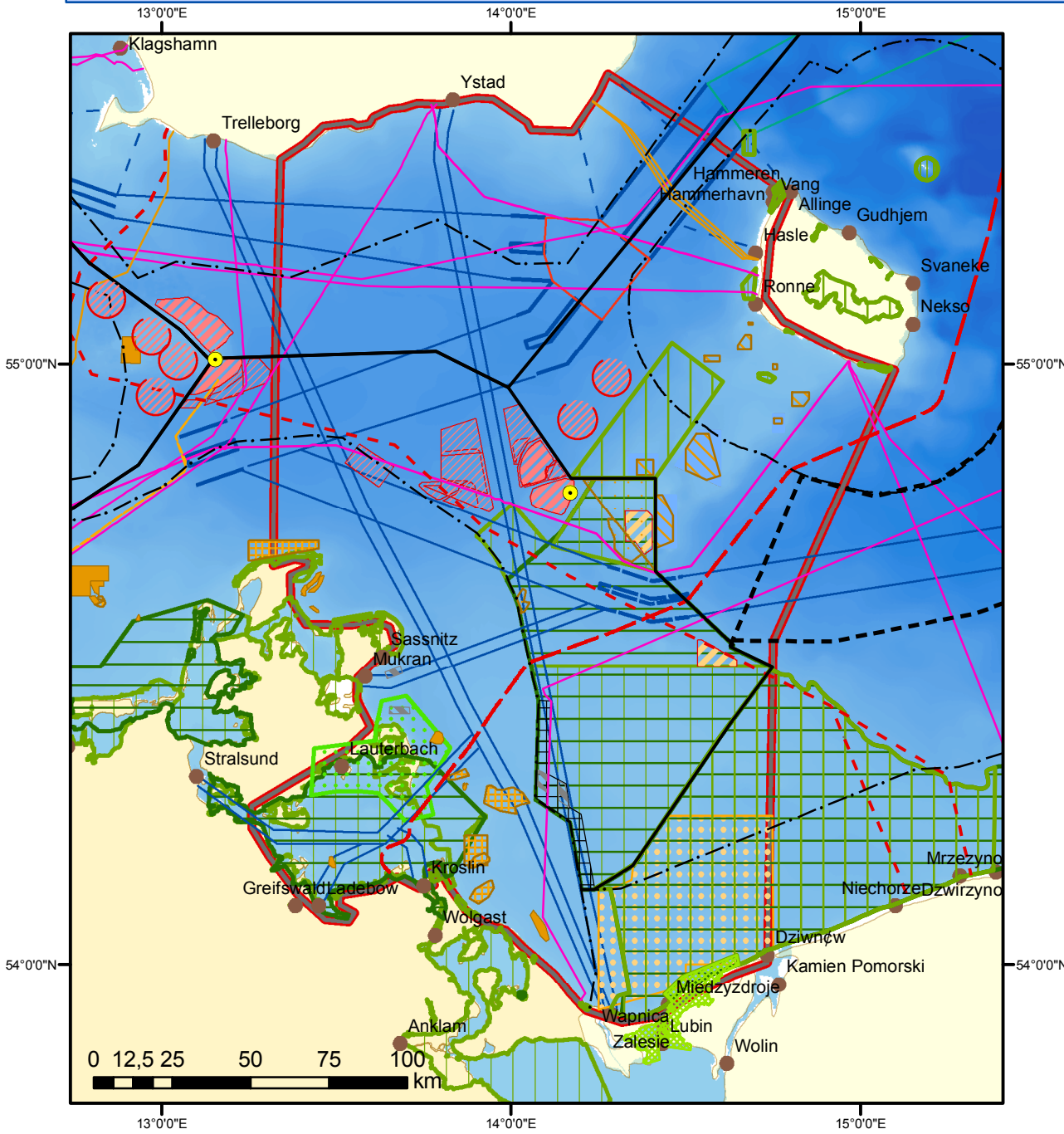


Pilot Project Area - MSP Pomeranian Bight / Arkona Basin

- Provisional stocktake -



Legend

- Shipping**
 - Shipping Route
 - Traffic Separation Scheme
 - TSS/Ship Route, Recommended
 - - Inshore Traffic Zone
 - Deep Water Route
 - Precautionary Area
 - · · Territorial Waters HELCOM_conf
- Shipping**
 - Measurement Platform
- Underwater Cables**
 - High Voltage Cable, in Use
 - High Voltage Cable, Approved
 - Data Cable, in Use
 - Data Cable, out of Use
 - Data Cable, Planned
- Sand and Gravel Extraction**
 - In Use
 - Approved
 - Planned
 - Proposed
 - Presently out of use
 - Status unknown
- Nature Conservation**
 - Natura 2000 - SPA Bird Directive
 - Natura 2000 - SAC Habitat Directive
 - UNESCO Biosphere Reserve
 - National Park
- Natural Gas**
 - Presently out of use
- Pipelines**
 - Natural Gas Pipeline, Approved
 - Natural Gas Pipeline, in Use
 - Natural Gas Pipeline, Planned
- Offshore Windfarms**
 - In Use
 - Approved
 - Planned
 - Denied
 - Denmark: OWP Project, no fixed outlines yet
- Platforms**
 - Measurement Platform
- Boundaries**
 - EEZ
 - · · Territorial Sea
 - Borders
 - Pilot Project Area Pomeranian Bight
 - unclear legal status (PL and DK)
 - Northern Approach / Roadstead
 - Seaports of Swinoujscie and Szczecin*

*According to German opinion this area is part of the German EEZ, whereas in relation to Poland no rights or sovereign powers are exercised. According to Polish opinion this area is part of the Polish territorial sea.

Map Projection:
Mercator (54°N), WGS 84
BSH / M5280 - 30.03.2010

